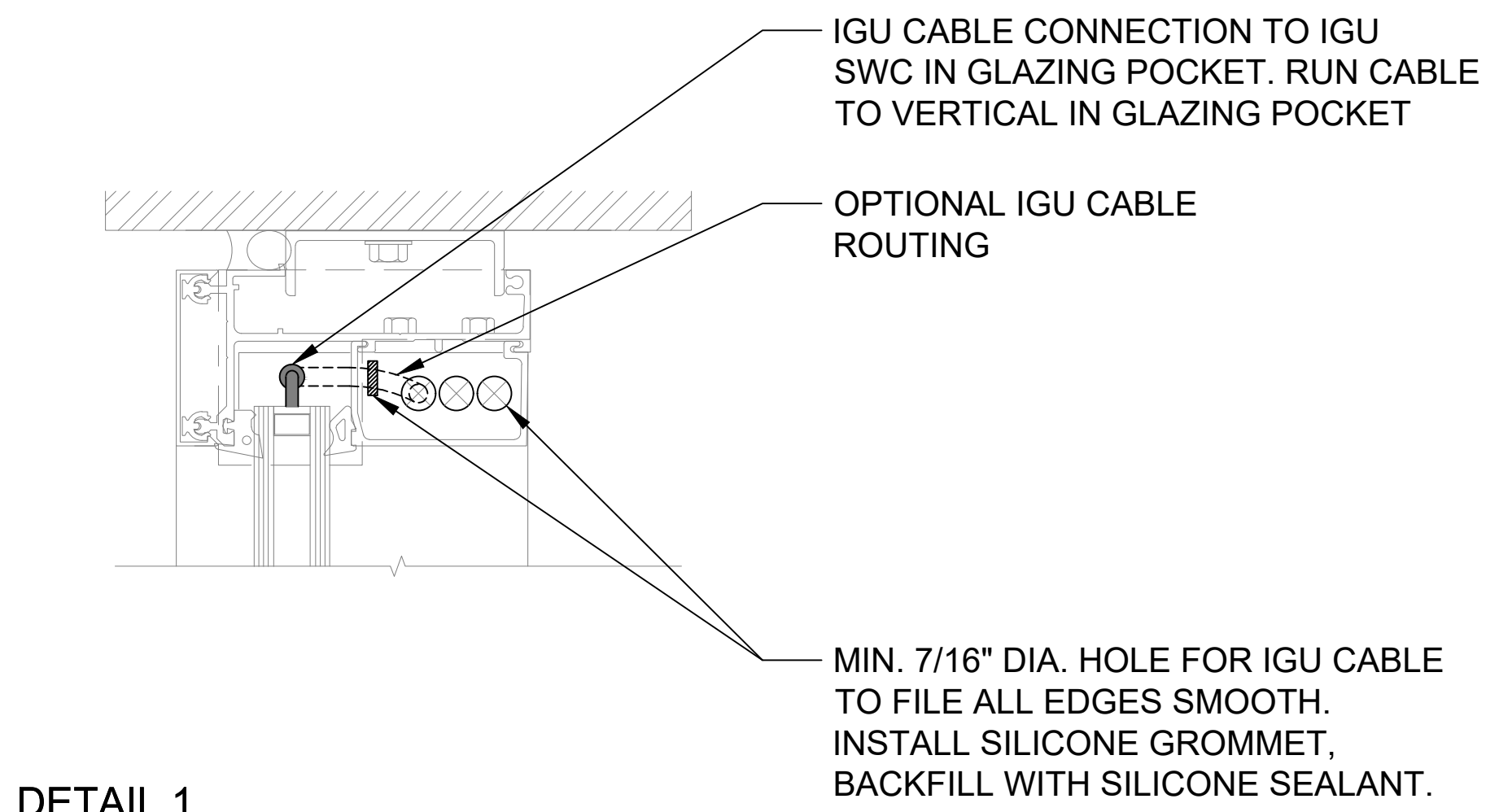
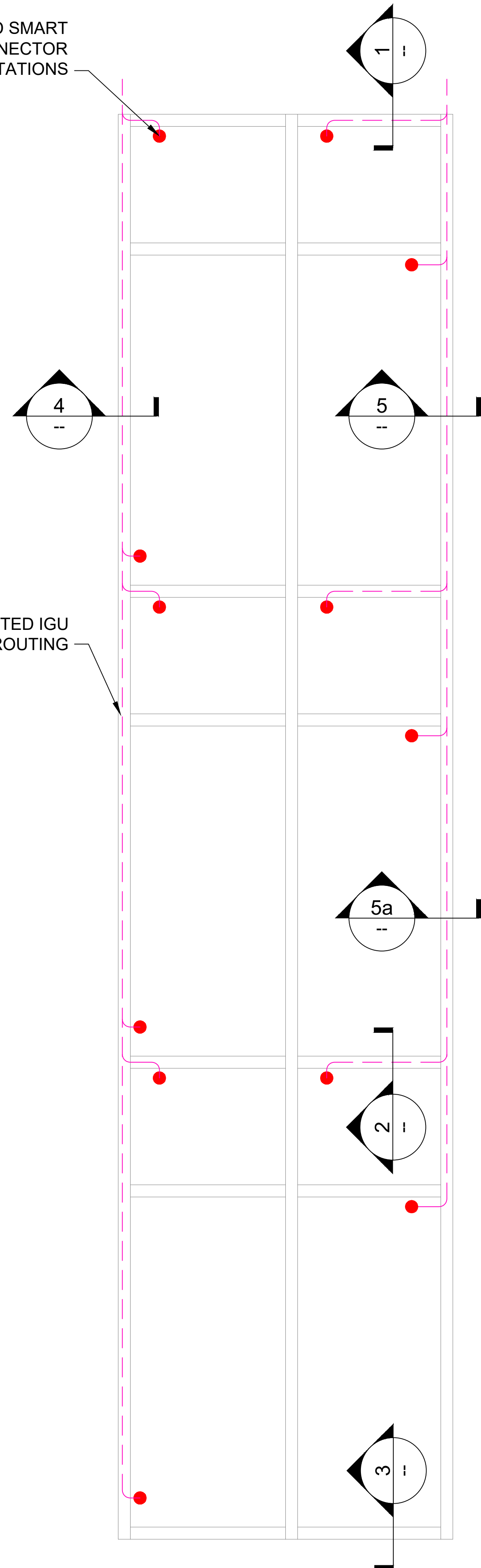
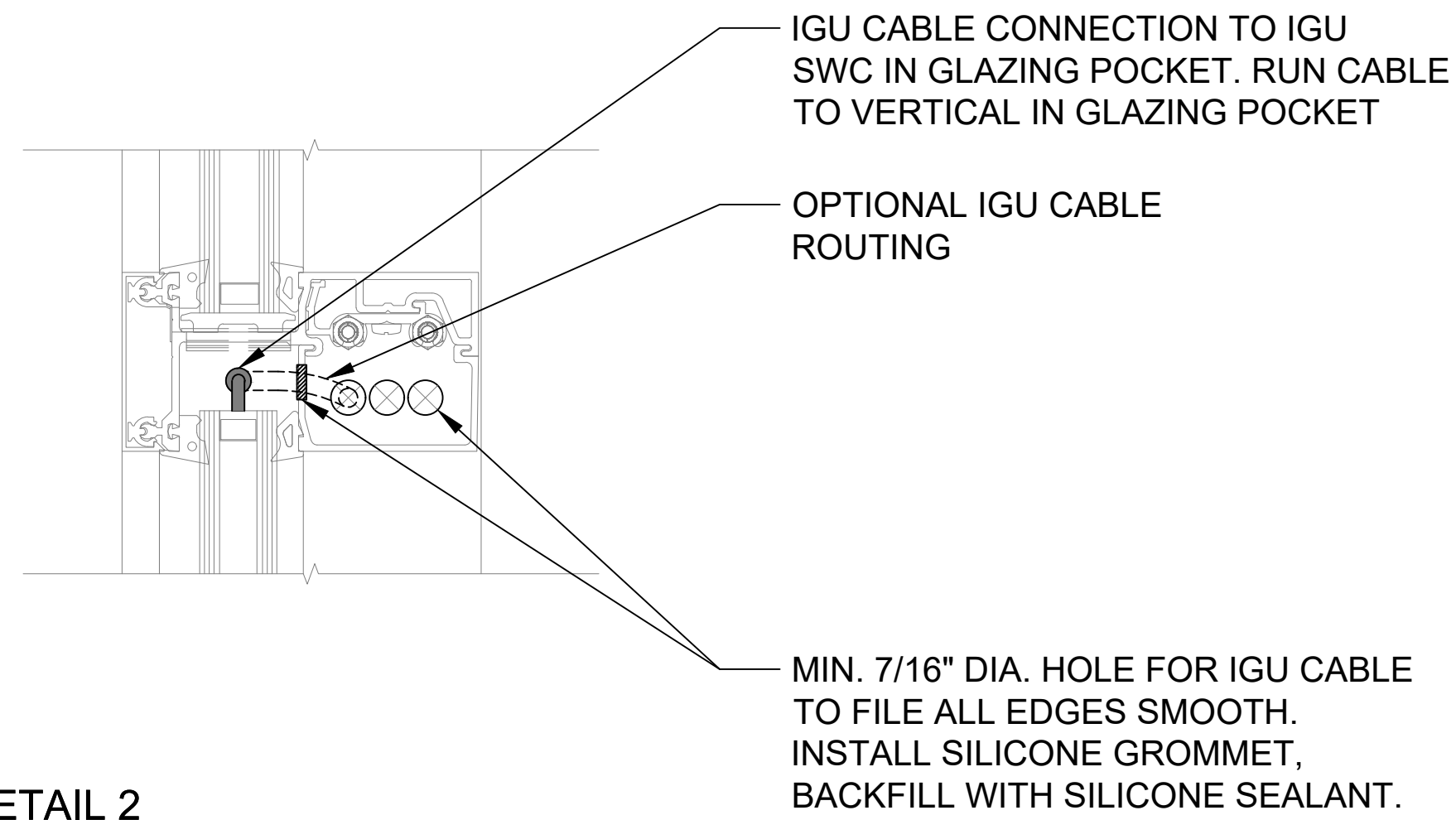


- NOTES:
1. INSTALLER TO PROVIDE GROMMETS AT ALL FRAME PENETRATIONS WHERE POSSIBLE TO AVOID CABLE DAMAGE.
 2. INSTALLER TO LABEL IGU CABLES WITH IGU NAME TO WHICH IT IS CONNECTED.
 3. WHEN GLAZING POCKET CANNOT ACCOMMODATE IGU/SWC, INCORPORATE SERVICE LOOP INTO IGU CABLING. MAKE CONNECTION TO SWC AS YOU ARE GLAZING AND PUSH CONNECTOR THROUGH HOLE AND INTO MULLION.
 4. NO WIRE ROUTING IN SILL.

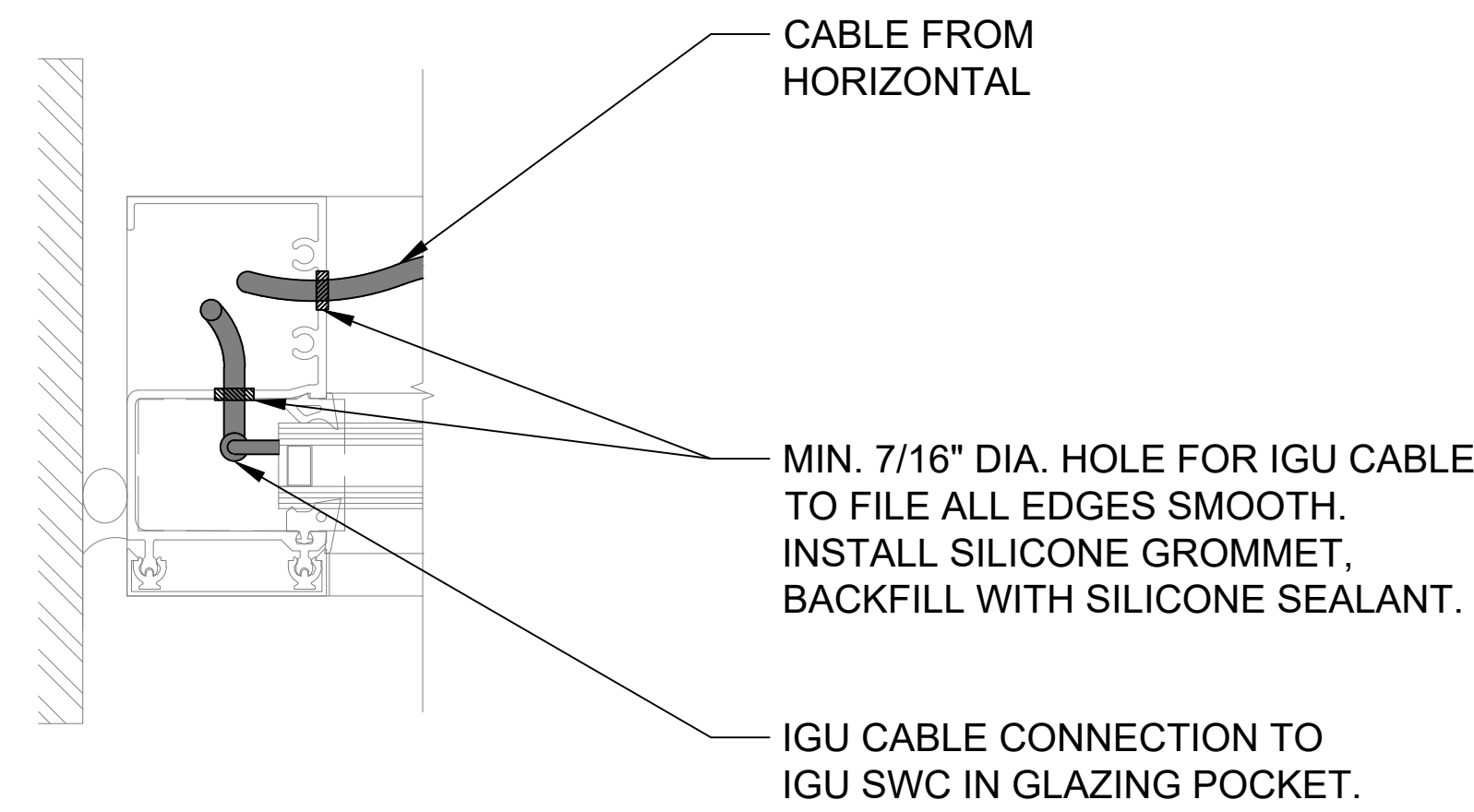
SUGGESTED SMART WINDOW CONNECTOR (SWC) ORIENTATIONS



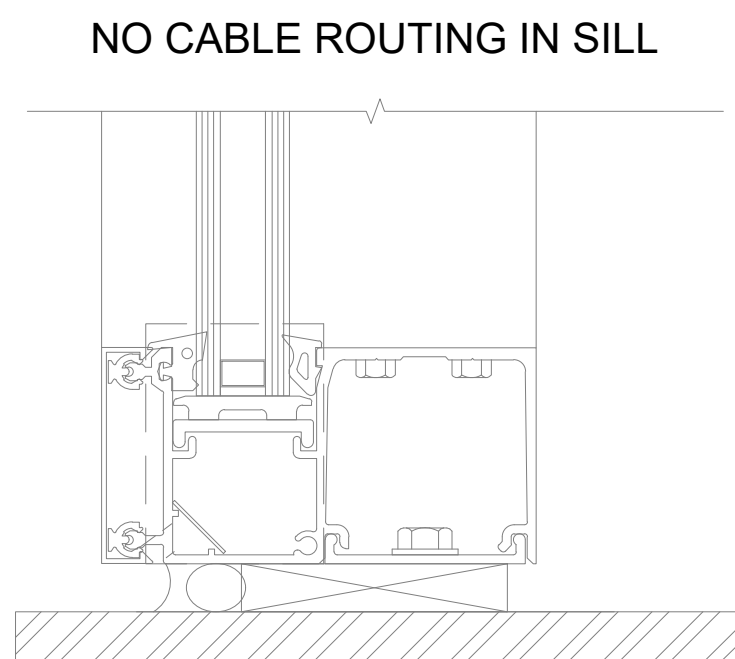
DETAIL 1
HEAD



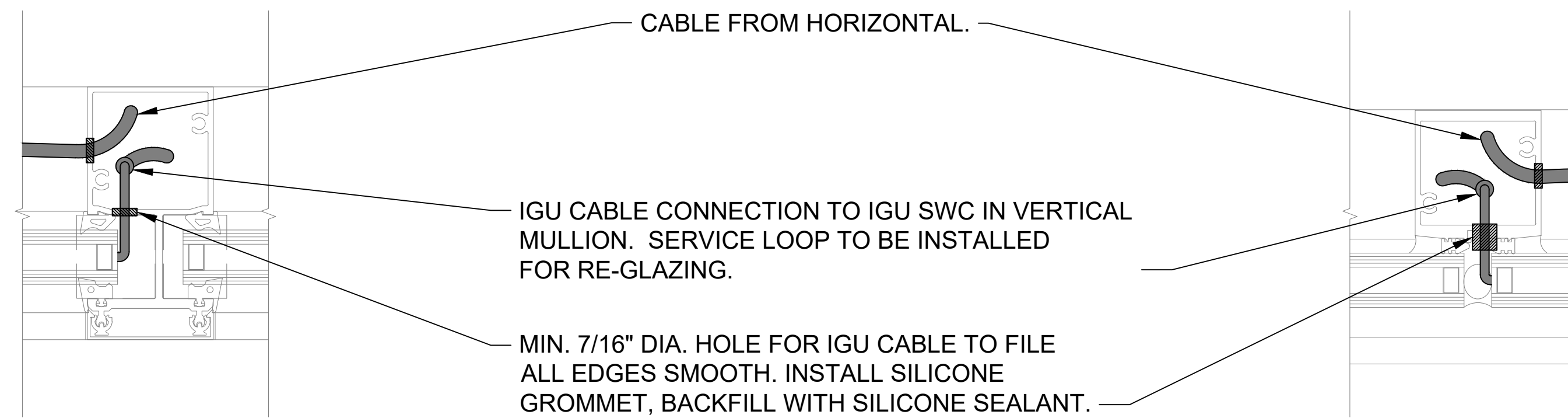
DETAIL 2
HORIZONTAL MULLION



DETAIL 4
LEFT JAMB



DETAIL 3
SILL



DETAIL 5
VERTICAL MULLION

DETAIL 5a
SSG MULLION

TYPICAL ELEVATION
SCALE: NONE

1 INSTALLATION DETAILS: FOR OLDCASTLE - ICR 225 - B450 (CW)