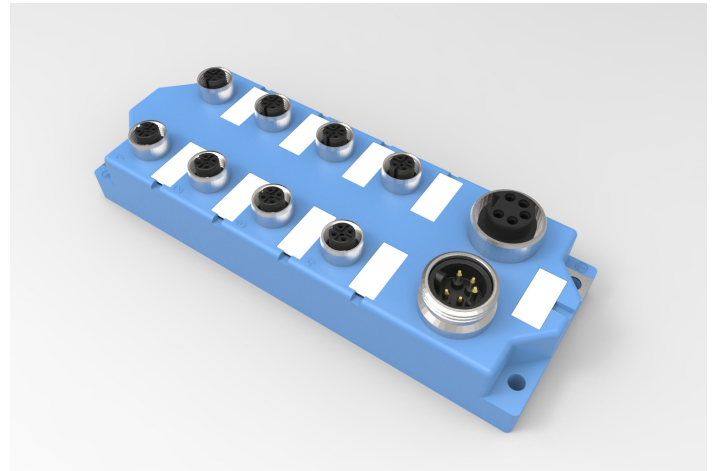


8 Port Drop Box

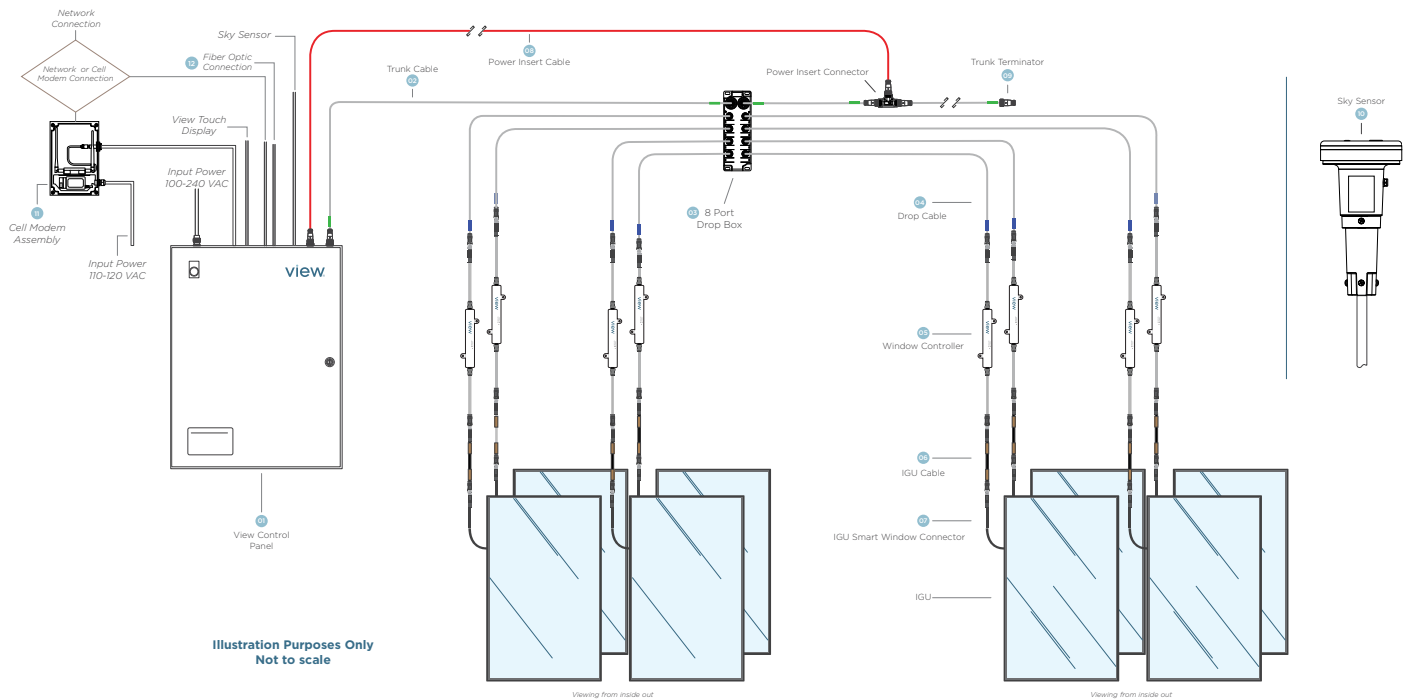
A network distribution component used to connect multiple Drop Cables to a Trunk Line. The distribution component will have 8 Drop Cable connection ports.

Features

- Connector Series: Junction Box
- Termination: 7/8M, 7/8F, M12F (x8)
- Locking Type: Fix screw
- Coding Type: A-coding

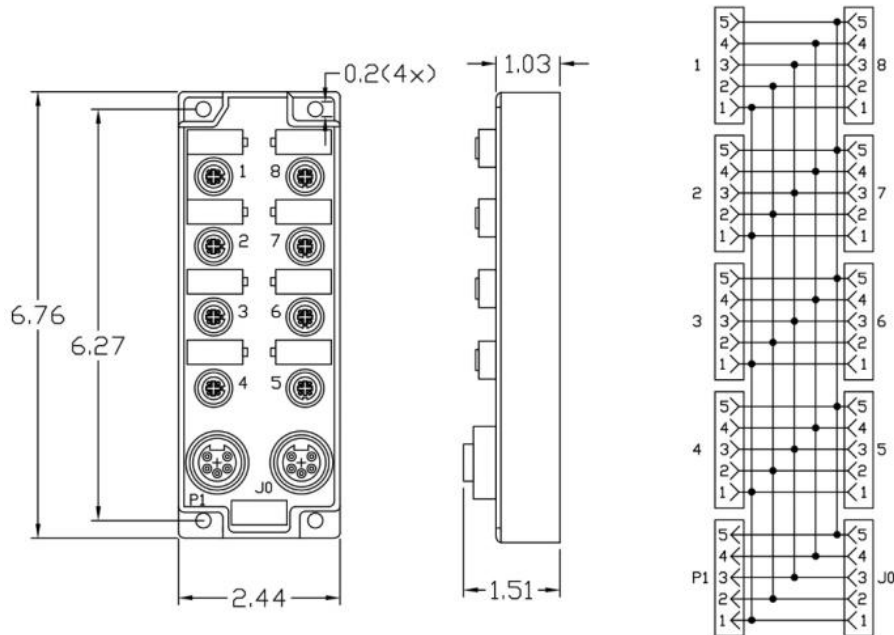


System Overview



Dimensions

Dimensions in inches



Specifications

Ambient Temperature	-25 deg C to + 80 deg C (-13 deg F to + 176 deg F)
Connector Insert	PA
Connector Contacts	Brass with gold plated
Material of Body	PBT
Coupling Nut/Screw	Brass/Zinc Alloy with nickel plated
Body Color	Blue
Seal	Epoxy resin/FKM
Contact Resistance	Less than or equal to 5 mΩ
Rated Voltage	250V
Rated Current	4A per M12 connector, 9A total
IP Rating	IP 67 in locked condition
Mechanical Operation	> 100 cycles

Ordering Information

Part Number	Description
370-000024	8 Port Drop Box Connector